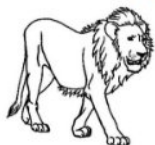


Les CONSONNES



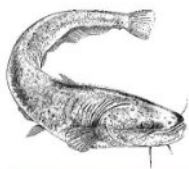
et les VOYELLES



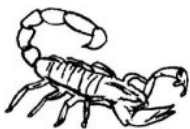
en langue lorhon



(téén)

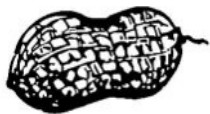


a



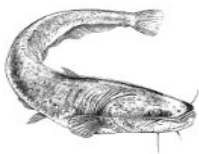
ama

aa



yaaka

an



busan

aw



naw

ay



lay

ää



bääni

(häämi, määtä,
nääwo, gbäää)

b



baranda

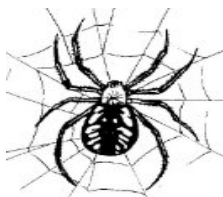
c



coli

(cangoli, cacaca,
cuti, codye, c)

d



dama

e



ele

ε



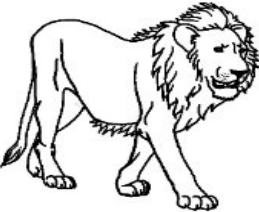
σεβε

f



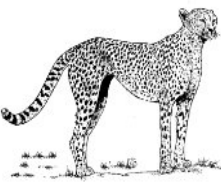
flase

g



gara

gb



gbangba

(**gb**arma, **gb**εɔ,
gboose, **gb**υε)

gw



gwaalɔ

(zυ**gw**εy , **gw**εyɔ)

h



hhɔɔɔɔɔ

i



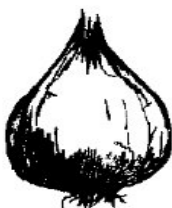
sikiri

l



lla

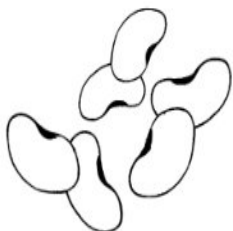
j



jama

(jaga, jaa, jakajo,
nyujowa, jen)

k



kabɔ

kp



kpankpo

(**kpaaki**, **kpakpara**,
kpanga, **kpɛngɛ**)

kw



kwee

(**kwaase**, **kwaami**,
kwaan)

l



laka

m



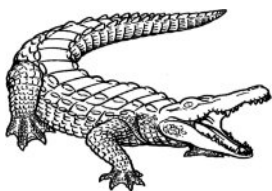
miini

n



naa

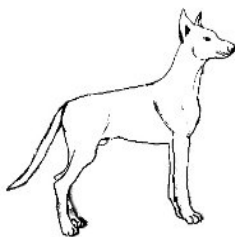
ny



nyeebe

(**ny**aaraka, **ny**anda,
nyeltaari, **ny**ɔɔme)

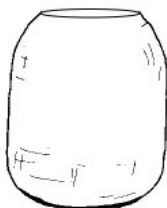
ɲm



ɲmanmi

(**ɲm**anga, **ɲm**arase,
ɲmemiye, **ɲm**orse)

o



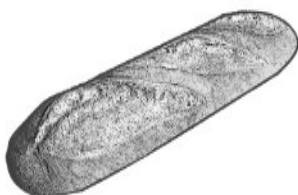
goko

ɔ



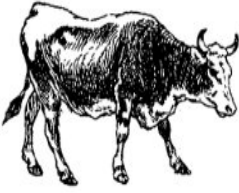
ɔko

p



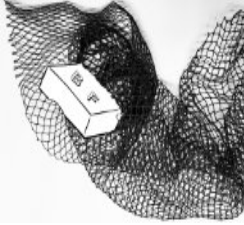
paanu

r



naara

s



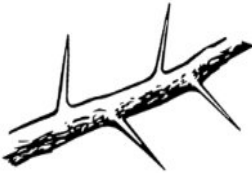
sapo

t



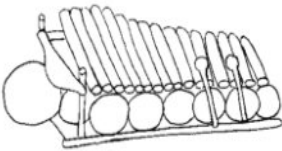
tasa

u



xubu

u



solaka

v



vungana

w



walası

x



xarı

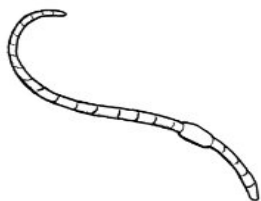
xw



xwaanla

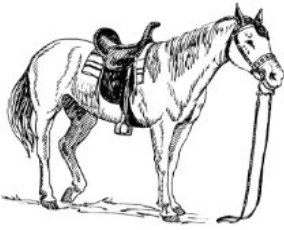
(**xw**ebanbanga,
xwenle, **xw**εεbi)

y



yɔla

z



zaga

'l



'lepiye

('lɪnkɛ, 'lɑngɔli, 'lɛr,
'lul, 'loron 'loron)

'p



'punmi

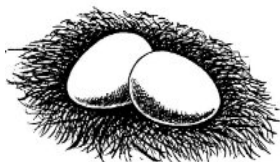
('pala, 'pansi, 'pɛɛbi,
'pɛɪɪɛ, 'pɔɔ, 'pɔɛ)

'y



'yɛɛɛɛ

ll



follo

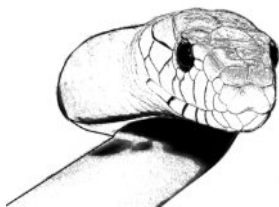
nn



kperxanna

(xana – *singe*)

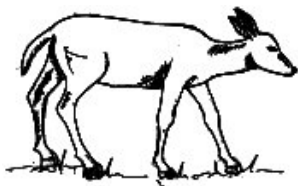
-r



gɔrgɔr

(waar, wɛr, wor)

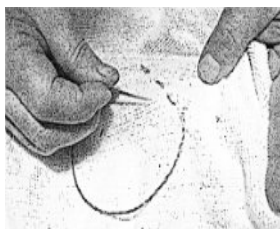
-l



kɛlma

(bal, bu, dɔl, kal,
mɛlmɛl, mil)

-b



gbɛb

(bib, giraahab,
yabwa, nyeb)

-t kput, 'lot,
-m gbim, xoxom,
-p gberep
-s ris

a	aa	an	aw	ay
e	ee	en	ew	ey
ε	εε	εn	εw	εy
i	ii	in	iw	iy
ι	ιι	ιn	ιw	ιy
o	oo	on	ow	oy
ɔ	ɔɔ	ɔn	ɔw	ɔy
u	uu	un	uw	uy
υ	υυ	υn	υw	υy